

Component Replacement

- electrical -



Xperia™ Z
C6602, C6603, C6606, C6616, L36h

CONTENTS

1 Replaceable Components 3

2 Component Placing..... 5

3 Additional Repair info 6

4 Revision History 11

For general information about electrical repair related issues, refer to 1220-1336: Generic Repair Manual - electrical

Test after electrical replacement: refer to 1273-1772 Mechanical Test Instruction

Do not remove shield can lids (Heat pasta are added and RF performance will be damaged)

1 Replaceable Components

EXPLANATION OF ABBREVIATIONS USED IN THE COLUMN 'COMMENTS' BELOW

COMPONENT LOCATION

P = Primary side

S = Secondary side

REPAIR METHOD

HA = Hot Air (removal & mounting)

ST = Soldering Tool (removal & mounting)

HA/ST = Hot Air for removal - Soldering Tool for mounting

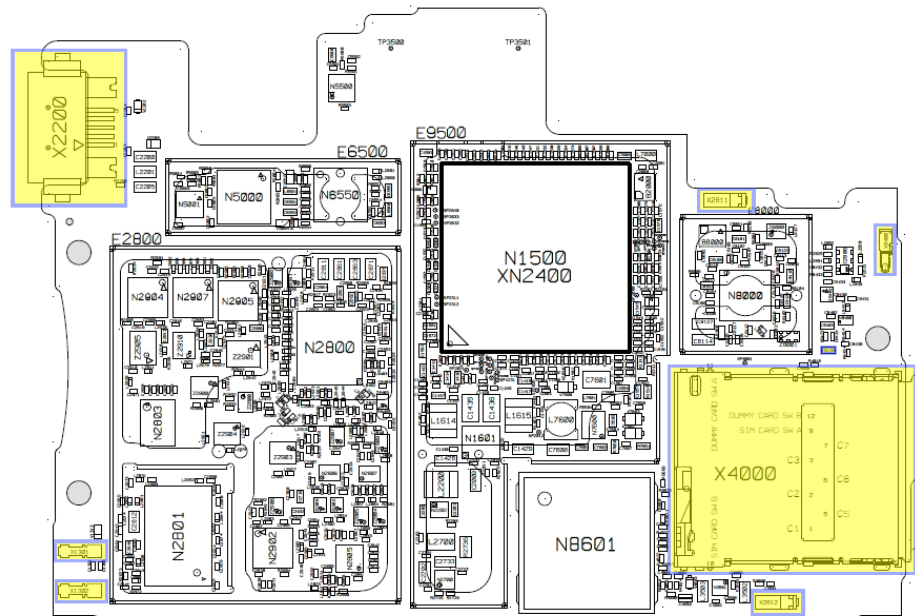
BGA = BGA Station

BH = Bottom Heater

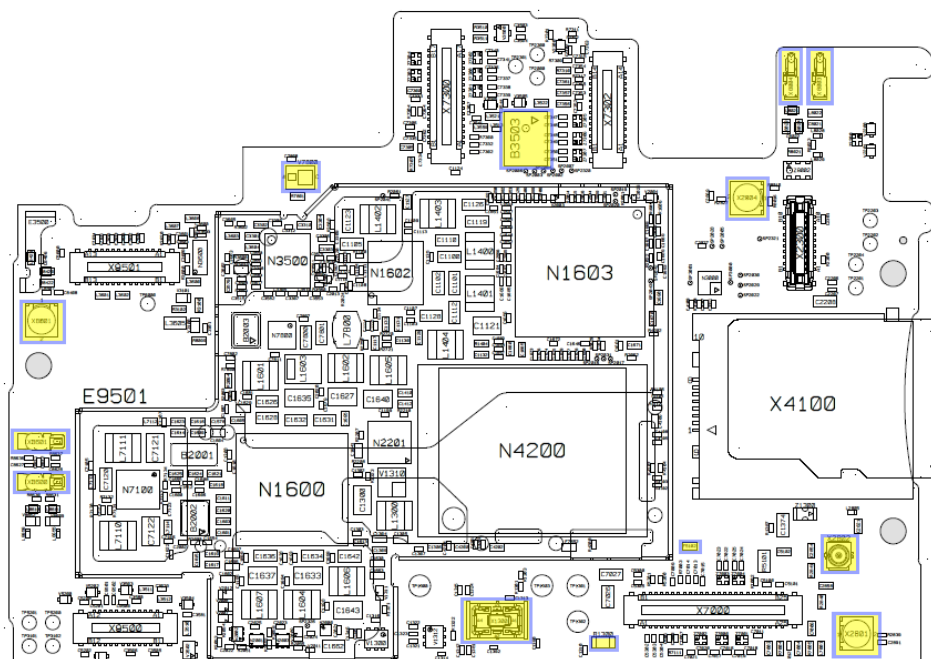
ADDITIONAL INFORMATION

⇒1 (2,3,4, etc.) = Proceed to 'Additional Repair Info' for further instructions in the indicated section(s).

Position	Component	Part no.	Comments
B3503	Microphone	1210-7410	S HA+BH or BGA ⇨1
C8128	Capacitor Ceramic 10.0 uF 6.3 V K0402	1257-4059	P HA+BH ⇨2
F5102	Fuse 0.25A 1.0*0.5mm	1265-7224	S HA+BH ⇨3
R1300	Resistor 0.01 Ohm +/-1% 200.0 mW (1.6x0.	1238-2147	S HA+BH ⇨4
V7800	LED White 2.04x1.64x0.75mm Flash LED Hig	1230-9540	S HA+BH ⇨5
X1300	Conn BtB Receptacle 4p HIROSE/BM22	1264-6156	S HA+BH ⇨6
X1301	Conn Leaf Spring Plug 1p	1252-2057	P HA+BH ⇨7
X1302	Conn Leaf Spring Plug 1p	1252-2057	P HA+BH ⇨7
X2200	Connector Micro USB	1242-6545	P HA+BH or BGA ⇨8
X2801	Conn Coax Receptacle 0p test switch	1221-6477	S HA+BH ⇨9
X2802	Conn Coax Receptacle 1p	1261-3585	S HA+BH ⇨10
X2804	Conn Coax Receptacle 0p test switch	1221-6477	S HA+BH ⇨11
X2811	Conn Leaf Spring	1201-4841	P HA+BH ⇨12
X2812	Conn Leaf Spring	1201-4841	P HA+BH ⇨12
X4000	Card Conn SIM	1264-0048	S HA+BH or BGA ⇨13
X8001	Conn Coax Receptacle 0p test switch	1221-6477	S HA+BH ⇨14
X8003	Conn Leaf Spring Plug 1p Antenna/GND Spr	1239-2123	S HA+BH ⇨15
X8004	Conn Leaf Spring Plug 1p Antenna/GND Spr	1239-2123	S HA+BH ⇨15
X8400	Conn Leaf Spring Plug 1p Antenna/GND Spr	1239-2123	P HA+BH ⇨16
X8600	Conn Leaf Spring Receptacle 1p Antenna/G	1238-5879	S HA+BH ⇨17
X8601	Conn Leaf Spring Receptacle 1p Antenna/G	1238-5879	S HA+BH ⇨17



Primary side



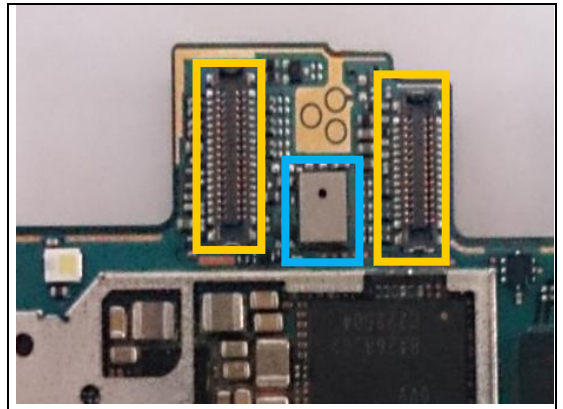
Secondary side

3 Additional Repair info

1

B5503

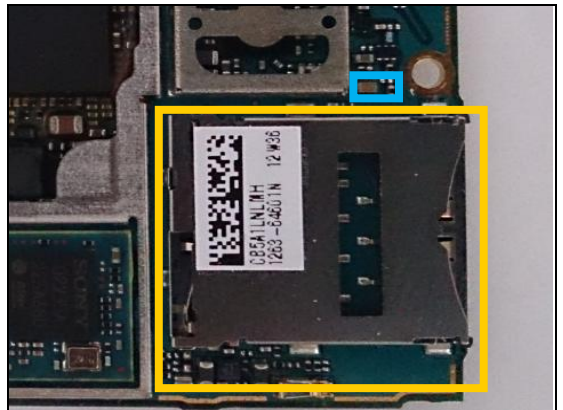
*Replace if no audio from secondary mic
Protect the BtB connectors with capton tape!
When replacing protect secondary mic with capton tape!*



2

C8128

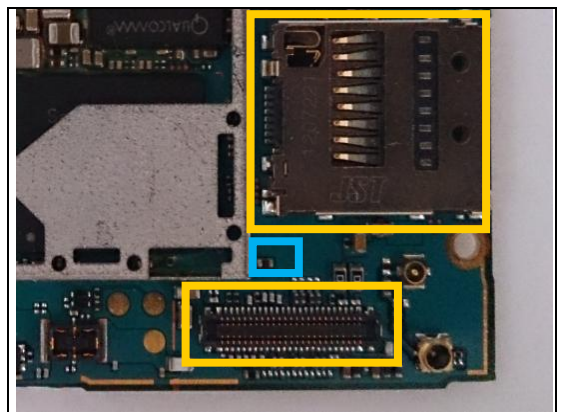
*Replace if short circuit (WLAN problems or high power consumption when WLAN are selected)
Protect the SIM card connector with capton tape!*



3

F5102

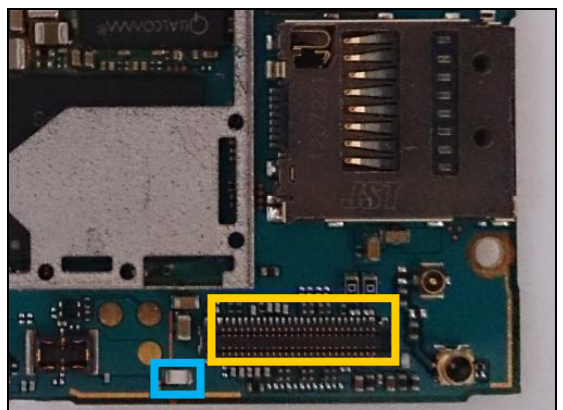
*Replace if open circuit (Vibrator not working)
Protect the SD and BtB connectors with capton tape!*



4

R1300

*Replace if open circuit (Phone dead)
Protect the BtB connector with capton tape!*

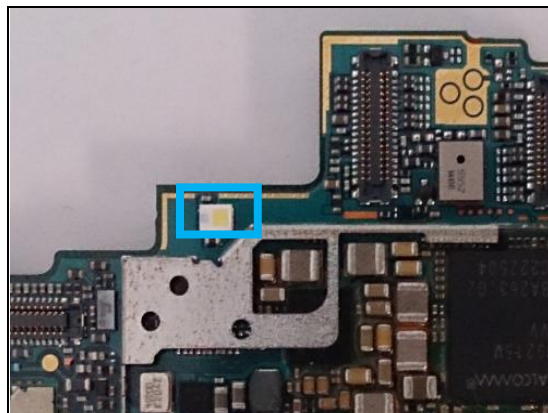


Repair Actions: Additional Repair Info

5

V7800

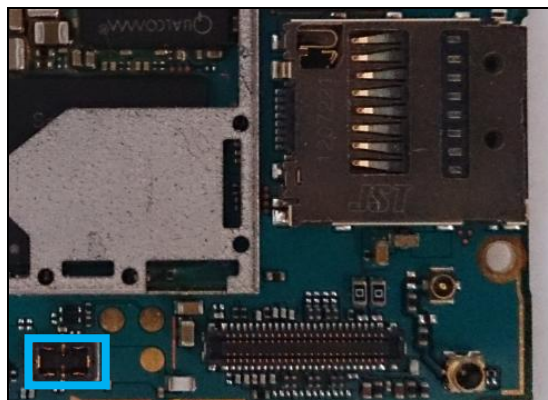
Replace if Flash LED not working



6

X1300

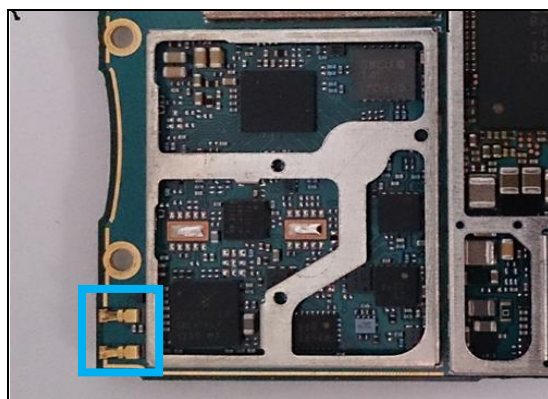
Replace if mechanical damaged. (Phone dead or power off)



7

X1301, X1302

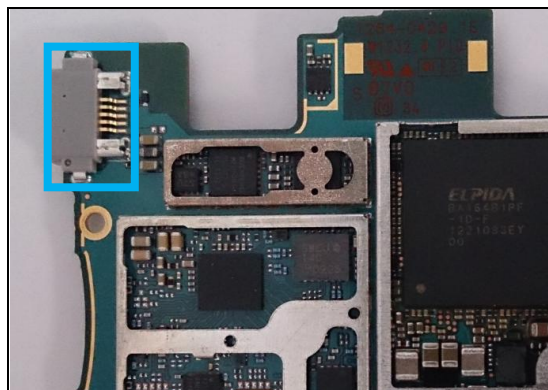
Replace if mechanical damaged (Main charger not working)



8

X2200

Replace if mechanical damaged (USB charger or data transfer not working)



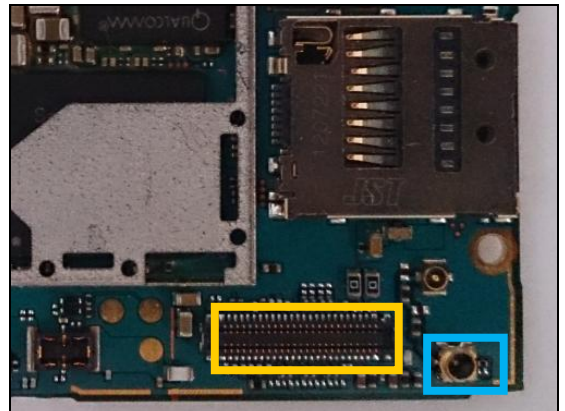
Repair Actions: Additional Repair Info

9

X2801

Replace if open circuit 1-2 (No or bad network, main antenna)

Protect the BtB connector with capton tape!

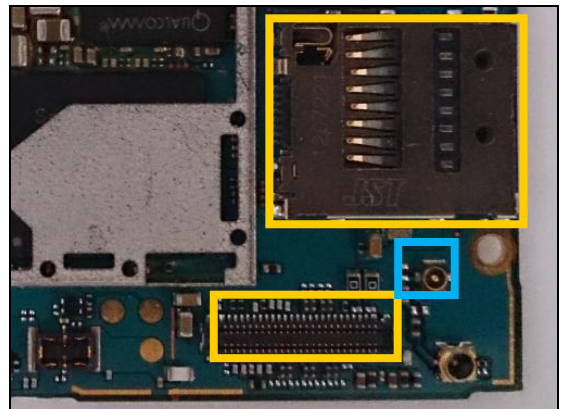


10

X2802

Replace if mechanical damaged (No or bad network, main antenna)

Protect the SD and BtB connectors with capton tape!

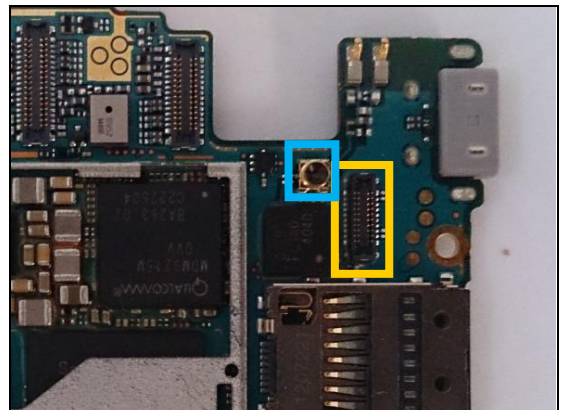


11

X2804

Replace if open circuit 1-2 (Bad network, secondary antenna)

Protect the BtB connector with capton tape!

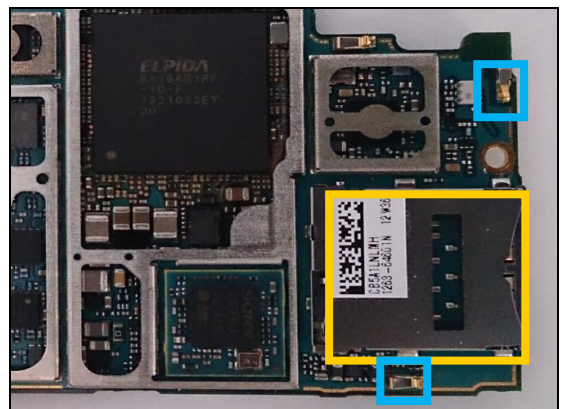


12

X2811, X2812

Replace if mechanical damaged (Bad network, grounding pins)

Protect the SIM card connector with capton tape!

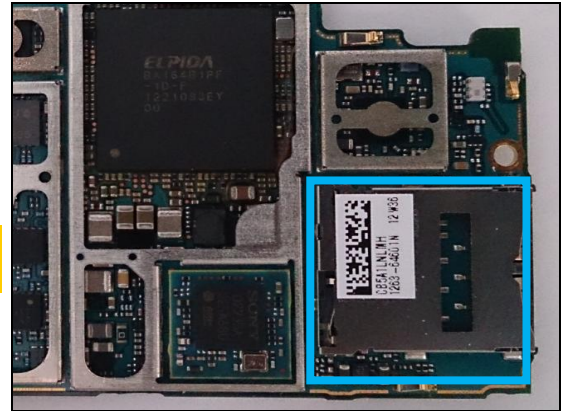


Repair Actions: Additional Repair Info

13

X4000

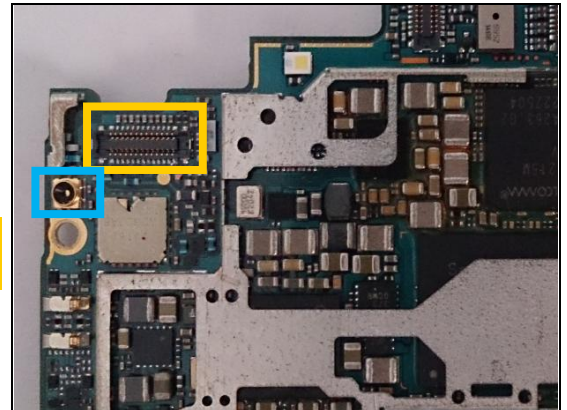
Replace if mechanical damaged (No network, restart, No SIM card inserted)



14

X8001

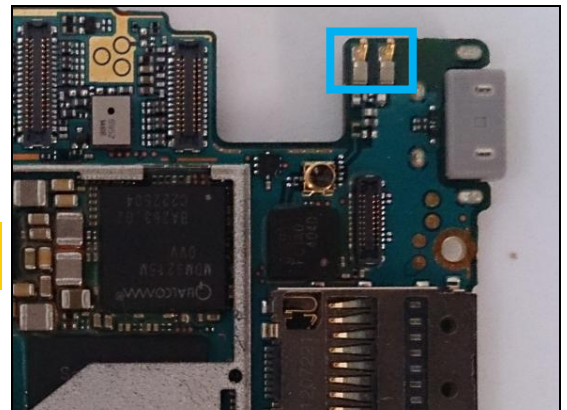
**Replace if open circuit 1-2 (no or bad WLAN/ BT/ GPS)
Protect the BtB connector with capton tape!**



15

X8003, X8004

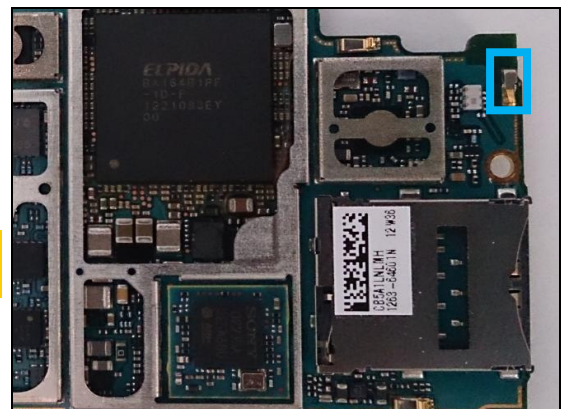
Replace if mechanical damaged (Bad network, secondary antenna)



16

X8400

Replace if mechanical damaged (no or bad WLAN/ BT/ GPS)

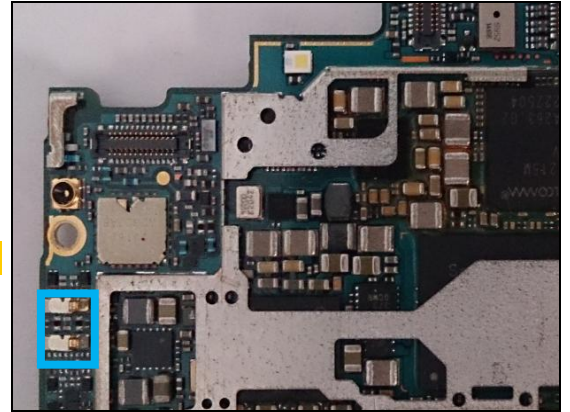


Repair Actions: Additional Repair Info

17

X8600, X8601

Replace if mechanical damaged (no or bad NFC)



4 Revision History

Rev.	Date	Changes / Comments
1	2014-03-25	Initial release
2	2014-04-18	Info "Do not remove shield can lids" added